

TEXniques

Publications for the TEX Community

Available now:

1. **VAX Language-Sensitive Editor (LSEEDIT)**
Quick Reference Guide for Use with the L^ATEX Environment and L^ATEX Style Templates by Kent McPherson
2. **Table Making – the INRST_ETEX Method** by Michael J. Ferguson
3. **User's Guide to the Idx_ETEX Program** by R. L. Aurbach
4. **User's Guide to the Glo_ETEX Program** by R. L. Aurbach
5. **Conference Proceedings, TEX Users Group Eighth Annual Meeting, Seattle, August 24–26, 1987, Dean Guenther, Editor**
6. **The Pj_ECT_EX Manual** by Michael J. Wichura
7. **Conference Proceedings, TEX Users Group Ninth Annual Meeting, Montréal, August 22–24, 1988, Christina Thiele, Editor**
8. **A Users' Guide for TEX** by Frances Huth
9. **An Introduction to L^ATEX** by Michael Urban
10. **L^ATEX Command Summary** by L. Botway and C. Biemesderfer
11. **First Grade TEX** by Arthur Samuel
12. **A Gentle Introduction to TEX** by Michael Doob
13. **METAFONTware** by Donald E. Knuth, Tomas G. Rokicki, and Arthur Samuel

Coming soon:

14. **A Permuted Index for TEX and L^ATEX** by Bill Cheswick

TEX Users Group
P. O. Box 9506
Providence, R. I. 02940, U.S.A.

Request for Information

The TeX Users Group maintains a database and publishes a membership list containing information about the equipment on which TeX is (or will be) installed and about the applications for which TeX is used. This list is updated periodically and distributed to members with TUGboat, to permit them to identify others with similar interests. Thus, it is important that the information be complete and up-to-date.

Please answer the questions below, in particular those regarding the status of TeX and the hardware on which it runs. (Operating system information is particularly important in the case of IBM mainframes and VAX.) This hardware information is used to group members in the listings by computer and output device.

If accurate information has already been provided by another TUG member at your site, indicate that member's name and the same information will be repeated automatically under your name. If your current listing is correct, you need not answer these questions again. Your cooperation is appreciated.

- *Send completed form with remittance* (checks, money orders, UNESCO coupons) to:
TeX Users Group
P. O. Box 594
Providence, Rhode Island 02901, U.S.A.
- *For foreign bank transfers* direct payment to the TeX Users Group, account #002-031375, at:
Rhode Island Hospital Trust National Bank
One Hospital Trust Plaza
Providence, Rhode Island 02903-2449, U.S.A.
- *General correspondence* about TUG should be addressed to:
TeX Users Group
P. O. Box 9506
Providence, Rhode Island 02940-9506, U.S.A.

Name: _____
Home <input type="checkbox"/> _____
Bus. <input type="checkbox"/> Address: _____

Qty	1991 Membership/TUGboat Subscription (Jan.-Dec.)	Amount
	Ordinary: <input type="checkbox"/> \$45.00	
	Students: <input type="checkbox"/> \$35.00 (photocopy of student ID required)	
	TUGboat back volumes 1980 1981 1982 1983 1984 1985 1986 1987 1988 1989 1990	
	Circle volume(s) desired: v.1 v.2 v.3 v.4 v.5 v.6 v.7 v.8 v.9 v.10 v.11	
	\$18 \$50 \$35 \$35 \$35 \$50 \$50 \$50 \$50 \$75 \$75	

Issues of TUGboat will be shipped via air service outside North America.
Quantity discounts available on request.

TOTAL ENCLOSED: _____
(Prepayment in U.S. dollars required)

Membership List Information

Institution (if not part of address): _____

Date: _____

Title: _____

Status of TeX: Under consideration

Phone: _____

Being installed

Network address: _____

Up and running since: _____

- Arpanet BITnet
- CSnet uucp
- JANET other _____

Approximate number of users: _____

Specific applications or reason for interest in TeX:

Version of TeX:

Pascal

C

other (describe)

My installation can offer the following software or technical support to TUG:

From whom obtained: _____

Please list high-level TeX users at your site who would not mind being contacted for information; give name, address, and telephone.

Hardware on which TeX is used:

Computer(s)	Operating system(s)	Output device(s)
_____	_____	_____
_____	_____	_____
_____	_____	_____

Each Institutional Member is entitled to:

- designate up to 7, 12 or 30 individuals to receive TUGboat subscriptions, depending on category of membership chosen; named individuals will be accorded full status as individual TUG members;
- reduced rates for TUG meetings/courses for all staff members, and for rental/purchase of videotapes;
- be acknowledged in every issue of TUGboat published during the membership year.

Instructions: Attach a list of the names and addresses of individuals to whom you would like TUGboat subscriptions mailed, to include answers to the questions on both side of this form—as appropriate, in particular those regarding the status of TeX and the computer(s)/operating system(s) on which it runs or is being installed. (For IBM and VAX, especially, the operating system is more relevant than model.) It would be particularly useful if you could provide this information as it relates to each individual or group using the same hardware. Please make as many copies of this form as needed or contact the TUG office for additional copies.

- *Send completed form with remittance* (checks, money orders, UNESCO coupons) to:
TeX Users Group
P. O. Box 594
Providence, Rhode Island 02901, U.S.A.
- *For foreign bank transfers*
direct payment to the TeX Users Group,
account #002-031375, at:
Rhode Island Hospital Trust National Bank
One Hospital Trust Plaza
Providence, Rhode Island 02903-2449, U.S.A.
- *General correspondence*
about TUG should be addressed to:
TeX Users Group
P. O. Box 9506
Providence, Rhode Island 02940-9506, U.S.A.

Institution/Organization: _____

Principal contact: _____

_____ Phone: _____

Qty	1991 Institutional Membership (Jan.-Dec.)	Amount
	Category A (incl. 7 subs.): educational \$435; non-ed. \$535; add'l subs. \$40/ea.	
	Category B (incl. 12 subs.): educational \$635; non-ed. \$735; add'l subs. \$40/ea.	
	Category C (incl. 30 subs.): educational \$1260; non-ed. \$1360; add'l subs. \$35/ea.	
	TUGboat back volumes 1980 1981 1982 1983 1984 1985 1986 1987 1988 1989 1990	
	Circle volume(s) desired: v.1 v.2 v.3 v.4 v.5 v.6 v.7 v.8 v.9 v.10 v.11	
	Indiv. issues \$18.00 ea. \$18 \$50 \$35 \$35 \$35 \$50 \$50 \$50 \$50 \$75 \$75	

Issues of TUGboat will be shipped by air service outside North America.

TOTAL ENCLOSED: _____
(Prepayment in U.S. dollars required)

Membership List Information

Institution: _____

Date: _____

Principal contact: _____

Status of TeX: [] Under consideration

Phone: _____

[] Being installed

Specific applications or reason for interest in TeX:

[] Up and running since: _____

This installation can offer the following software or technical support to TUG:

Approximate number of users: _____

Version of TeX:

[] Pascal

[] C

[] other (describe)

From whom obtained: _____

Please list high-level TeX users at your site who would not mind being contacted for information; give name, address, and telephone.

Hardware on which TeX is used:

Computer(s)	Operating system(s)	Output device(s)
_____	_____	_____
_____	_____	_____
_____	_____	_____

TEX

Another first from ArborText!

T
H
E

Virtual Fonts



A
R
B
O
R
T
E
X
T

ü Ü ö Ö ä Ä

We have added built-in support to

Preview and DVILASER

which makes it easy to use the new

multilingual features of TEX 3.0.

Future enhancements will provide

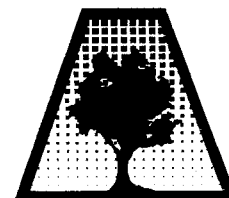
a standard set of virtual fonts based on

coding conventions adopted at TEX 90.

W
A
Y

**TEX 3.0 and support software is
available now for DEC/Risc-Ultrix, Sun, Apollo,
and HP9000 (300 & 400).**

**μ TEX 3.0 is a newly enhanced version
for the IBM PC.**

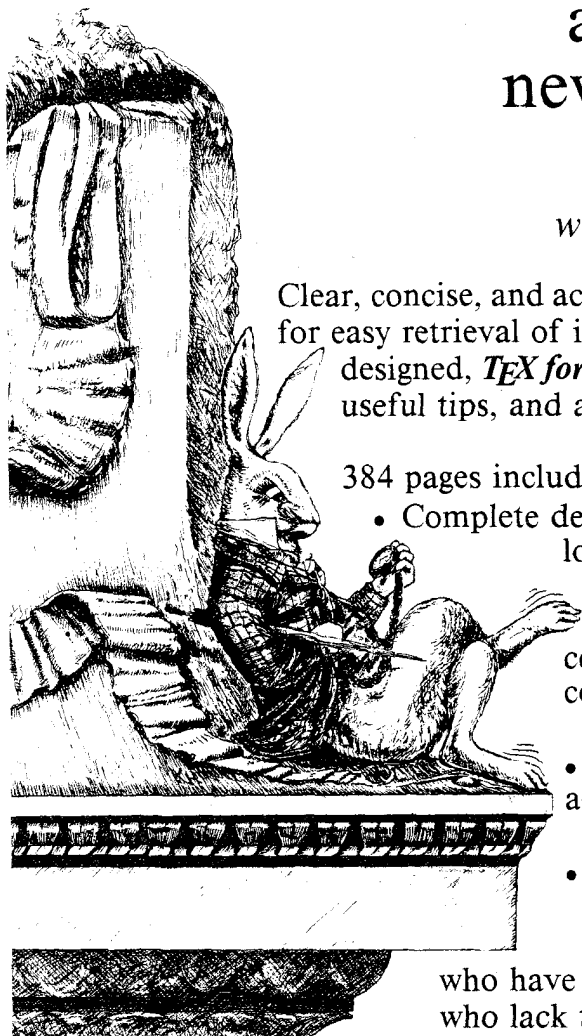


For *fast* answers to common *TEX* questions, you need ...

TEX for the Impatient

a practical handbook for
new and current *TEX* users

by Paul W. Abrahams
with Karl Berry and Kathryn A. Hargreaves



Clear, concise, and accessible, this handy reference manual is organized for easy retrieval of information. Thoroughly indexed and carefully designed, *TEX for the Impatient* is packed with explicit instructions, useful tips, and a wealth of witty and illuminating illustrations.

384 pages include:

- Complete descriptions of *TEX* commands, arranged for lookup either by function or alphabetically

Clear definitions of essential *TEX* concepts, collected in a separate chapter so that the command descriptions remain brief and accessible

- Explanations of common error messages and advice on solving problems that frequently arise

- A collection of useful macros

TEX for the Impatient is for busy people who have discovered the unmatched benefits of *TEX*, but who lack the time to master its intricacies. It is for everyone—new user to expert—who needs a quick reference guide to *TEX*.

Available now from

TEX Users Group

P. O. Box 9506
Providence, RI 02940, USA
Phone (401) 751-7760
FAX: (401) 751-1071
Mastercard/Visa, checks and money orders accepted

TUG Members . \$25
Regular price . . . \$27

Shipping in US: \$3/copy
Outside US: \$8/copy air

For T_EX Users . . .

New Services and Prices from Computer Composition Corporation

We are pleased to announce the installation of several ***new output services*** now available to T_EX users:

1. High Resolution Laser Imaging (1200 dpi) from Postscript diskette files created on either Mac- or PC-based systems.
2. High Resolution Laser Imaging (960 dpi) from DVI magnetic tape or diskette files using a variety of typefaces in addition to the Computer Modern typeface family.
3. High quality laser page proofs at 480 dpi.
4. **NEW PRICING** for high resolution laser imaging:
 - a. From **Postscript text files** in volumes over 400 pages **\$2.00 per page**
 - b. From **Postscript text files** in volumes between 100 & 400 pages **\$2.25 per page**
 - c. From **Postscript text files** in volumes below 100 pages . . **\$2.40 per page**
 - d. From **DVI files** in volumes over 400 pages **\$2.15 per page**
 - e. From **DVI files** in volumes between 100 & 400 pages **\$2.30 per page**
 - f. From **DVI files** in volumes below 100 pages **\$2.45 per page**

NOTE: DEDUCT \$1.00 FROM THE ABOVE PRICES FOR HIGH QUALITY LASER PAGE PROOFS.

5. **All jobs shipped within 48 hours.**

Call or write for page samples or send us your file and we will image it on the output unit of your choice.



COMPUTER COMPOSITION CORPORATION

1401 West Girard Avenue • Madison Heights, MI 48071

(313) 545-4330 FAX (313) 544-1611

— Since 1970 —

Publishing Companion® translates

WordPerfect

to

TEX or L^ATEX

IN ONE EASY STEP!

With **Publishing Companion**, you can publish documents using TEX or L^ATEX with **little or no TEX knowledge**. Your WordPerfect files are translated into TEX or L^ATEX files, so anyone using this simple word processor can immediately begin typesetting their own documents!

Publishing Companion translates EQUATIONS, FOOTNOTES, ENDNOTES, FONT STYLES, and much more!

Retail Price	\$249.00
Academic Discount Price	\$199.00

For more information or to place an order, call or write:

K-TALK[®]
COMMUNICATIONS

30 West First Ave, Suite 100
Columbus, Ohio 43201
(614)294-3535
FAX (614)294-3704

TYPESET QUALITY WITH THE EASE OF WORD PROCESSING

TEX EDITION of MathEdit

This powerful new equation editor can be used to create equations for TEX.

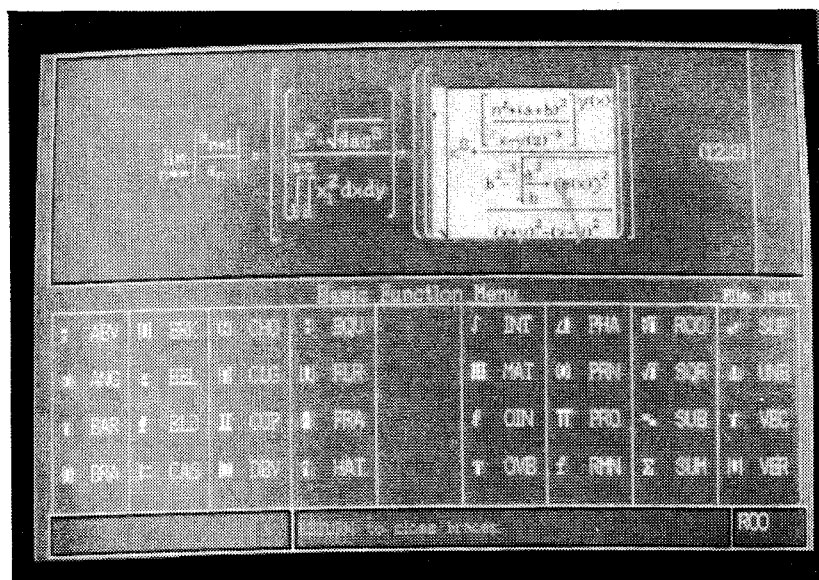
For IBM PC

MathEdit

- * Easy to Use Version 2.0
- * Menu driven so no codes need to be learned
- * High-quality TEX printing

WYSIWYG ->

View your equation as you create it. Then insert into your TEX document with one command.



TEX Edition ONLY \$129.00

Professional Edition \$199.00

Shipping: \$4 (U.S.A.), \$25 (Canada), \$35 (Overseas)

VISA, Mastercard and University and Government P.O.'s accepted.

K-TALK
COMMUNICATIONS

30 West First Avenue
Columbus, Ohio 43201

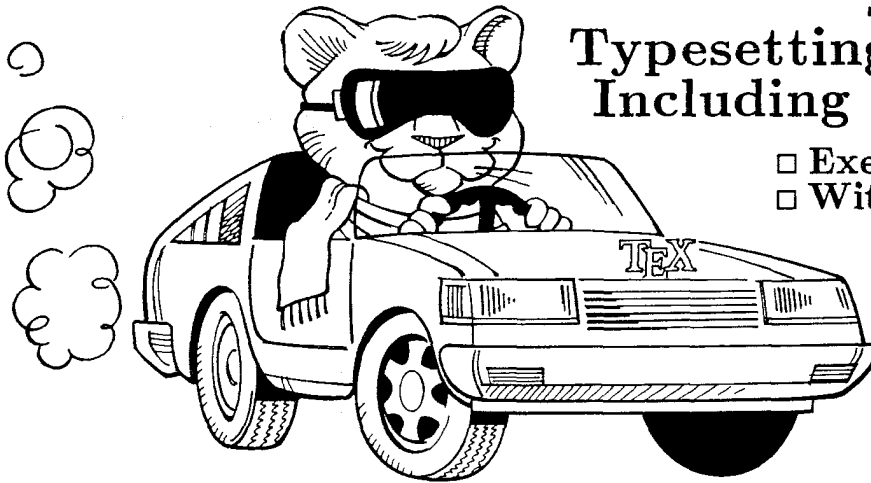
(614) 294-3535

FAX (614) 294-3704

TurboTeX

Typesetting Software
Including METAFONT

- Executables \$150
- With source \$300



TeX 3.0
Update!
Now Includes
EGA/VGA
Previewer!

TurboTeX Release 3.0 software brings you the latest TeX 3.0 and METAFONT 2.0 standards: preloaded plain TeX, L^ATeX, A^AS-TeX and A^AS-L^ATeX, and plain METAFONT interfaced to CGA/EGA/VGA/Hercules graphics; TRIP and TRAP certification; Computer Modern and L^ATeX fonts, and printer drivers for HP LaserJet Plus/II/IIP, HP DeskJet, PostScript, and Epson LQ and FX dot-matrix printers. This wealth of software runs on your IBM PC (MS-DOS or OS/2), UNIX, or VAX/VMS system.

■ **Best-selling Value:** TurboTeX sets the standard for power and value among TeX implementations: one price buys a complete, commercially-hardened typesetting system. *Computer* magazine recommended it as "the version of TeX to have," *IEEE Software* called it "industrial strength," and thousands of satisfied users worldwide agree.

TurboTeX gets you started quickly, installing itself automatically under MS-DOS, and compiling itself automatically under UNIX. The 90-page User's Guide includes generous examples and a full index, and leads you step-by-step through installing and using TeX and METAFONT.

■ **Power Features:** TurboTeX breaks the 640K memory barrier under MS-DOS on any IBM-compatible PC with our virtual memory sub-system. Even without expanded memory hardware, you'll

have the same sized TeX that runs on multi-megabyte mainframes, with plenty of memory for large documents, complicated formats, and demanding macro packages (like PICTeX and A^AS-L^ATeX 2.0) that break other TeX implementations. On larger computers, TurboTeX runs up to 3 times faster in less memory than the Stanford Pascal distribution.

■ **Source code:** Order the TurboTeX source in portable C, and you will receive more disks with over 85,000 lines of generously commented TeX, TurboTeX, METAFONT, and printer driver source code, including: our WEB system in C; PASCHAL, our proprietary Pascal-to-C translator; and preloading, virtual memory, and graphics code. TurboTeX meets C portability standards like ANSI and K&R, and is robustly portable to a growing family of operating systems.

■ **Availability & Requirements:** TurboTeX executables for IBM PC's include the User's Guide and require 640K and hard disk. Order source code (includes Programmer's Guide) for other machines. Source compiles with Microsoft C 5.0 or later on the PC; other systems need 1 MB memory and a C compiler supporting UNIX standard I/O. Media is 360K 5-1/4" PC floppy disks; other formats at extra cost.

■ **Upgrades:** If you have TurboTeX Release 2.0, you can upgrade the executables for only \$40. If you have the source distribution, upgrade

both executables and source for \$80. Or, get either applicable upgrade free when you buy the AP-TeX fonts (see facing page) for \$200!

■ **No-risk trial offer:** Examine the documentation and run the PC TurboTeX for 10 days. If you are not satisfied, return it for a 100% refund or credit. (Offer applies to PC executables only.)

■ **Free Buyer's Guide:** Ask for the free, 70-page Buyer's Guide for more details on TurboTeX and dozens of TeX-related products: previewers, TeX-to-FAX and TeX-to-Ventura/Pagemaker translators, optional fonts, graphics editors, public domain TeX accessory software, books and reports.

Ordering TurboTeX

Ordering TurboTeX is easy and delivery is fast, by phone, FAX, or mail. Terms: Check with order (free media and ground shipping in US), VISA, Mastercard (free media, shipping extra); Net 30 to well-rated firms and public agencies (shipping and media extra). Discounts available for quantities or resale. International orders gladly expedited via Air or Express Mail.

The Kinch Computer Company
PUBLISHERS OF TURBOTEX
501 South Meadow Street
Ithaca, New York 14850 USA
Telephone (607) 273-0222
FAX (607) 273-0484

AP-TEX Fonts


TEX-compatible Bit-Mapped Fonts
Identical to
Adobe PostScript Typefaces

If you are hungry for new TEX fonts, here is a feast guaranteed to satisfy the biggest appetite! The AP-TEX fonts serve you a banquet of gourmet delights: 438 fonts covering 18 sizes of 35 styles, at a total price of \$200. The AP-TEX fonts consist of PK and TFM files which are exact TEX-compatible equivalents (including "hinted" pixels) to the popular PostScript name-brand fonts shown at the right. Since they are directly compatible with any standard TEX implementation (including kerning and ligatures), you don't have to be a TEX expert to install or use them.

When ordering, specify resolution of 300 dpi (for laser printers), 180 dpi (for 24-pin dot matrix printers), or 118 dpi (for previewers). Each set is on ten 360 KB 5-1/4" PC floppy disks. The \$200 price applies to the first set you order; order additional sets at other resolutions for \$60 each. A 30-page user's guide fully explains how to install and use the fonts. Sizes included are 5, 6, 7, 8, 9, 10, 11, 12, 14.4, 17.3, 20.7, and 24.9 points; headline styles (equivalent to Times Roman, Helvetica, and Palatino, all in bold) also include sizes 29.9, 35.8, 43.0, 51.6, 61.9, and 74.3 points.

The Kinch Computer Company
PUBLISHERS OF TURBOTEX
501 South Meadow Street
Ithaca, New York 14850
Telephone (607) 273-0222
FAX (607) 273-0484

Helvetica, Palatino, Times, and New Century Schoolbook are trademarks of Allied Linotype Co. ITC Avant Garde, ITC Bookman, ITC Zapf Chancery, and ITC Zapf Dingbats are registered trademarks of International Typeface Corporation. PostScript is a registered trademark of Adobe Systems Incorporated. The owners of these trademarks and Adobe Systems, Inc. are not the authors, publishers, or licensors of the AP-TEX fonts. Kinch Computer Company is the sole author of the AP-TEX fonts, and has operated independently of the trademark owners and Adobe Systems, Inc. in publishing this software. Any reference in the AP-TEX font software or in this advertisement to these trademarks is solely for software compatibility or product comparison. LaserJet and DeskJet are trademarks of Hewlett-Packard Corporation. TEX is a trademark of the American Math Society. TurboTEX and AP-TEX are trademarks of Kinch Computer Company. Prices and specifications subject to change without notice. Revised October 9, 1990.

Avant Garde	Bold
<i>Avant Garde</i>	Bold Oblique
Avant Garde	Demibold
<i>Avant Garde</i>	Demibold Oblique
Bookman	Light
<i>Bookman</i>	Light Italic
Bookman	Demibold
<i>Bookman</i>	Demibold Italic
Courier	
<i>Courier</i>	Oblique
Courier	Bold
<i>Courier</i>	Bold Oblique
Helvetica	
<i>Helvetica</i>	Oblique
Helvetica	Bold
<i>Helvetica</i>	Bold Oblique
Helvetica Narrow	
<i>Helvetica Narrow</i>	Oblique
Helvetica Narrow	Bold
<i>Helvetica Narrow</i>	Bold Oblique
Schoolbook	New Century Roman
<i>Schoolbook</i>	New Century Italic
Schoolbook	New Century Bold
<i>Schoolbook</i>	New Century Bold Italic
Palatino	Roman
<i>Palatino</i>	Italic
Palatino	Bold
<i>Palatino</i>	Bold Italic
Times	Roman
<i>Times</i>	Italic
Times	Bold
<i>Times</i>	Bold Italic
<i>Zapf Chancery</i>	Medium Italic
Symbol ΔΦΓ∂ΛΠΘ	
Zapf Dingbats	

Public Domain T_EX

The public domain versions of T_EX software are available from *Maria Code - Data Processing Services* by special arrangement with Stanford University and other contributing universities. The standard distribution tape contains the source of T_EX and METAFONT, the macro libraries for A_MS-T_EX, L_AT_EX, SliT_EX and HP T_EX, sample device drivers for a Versetec and LN03 printers, documentation files, and many useful tools.

Since these are in the public domain, they may be used and copied without royalty concerns. A portion of your tape cost is used to support development at Stanford University.

Compiled versions of T_EX are available for DEC VAX/VMS, IBM CMS, IBM MVS and DEC TOPS systems. Systems using a standard format must compile T_EX with a Pascal compiler.

T_EX Order Form

T_EX Distribution tapes:

- ___ Standard ASCII format
- ___ Standard EBCDIC format
- ___ Special VAX/VMS format Backup
- ___ Special DEC 20/TOPS 20 Dumper format
- ___ Special IBM VM/CMS format
- ___ Special IBM MVS format

Font Library Tapes (GF files)

- ___ 300 dpi VAX/VMS format
- ___ 300 dpi generic format
- ___ IBM 3820/3812 MVS format
- ___ IBM 3800 CMS format
- ___ IBM 4250 CMS format
- ___ IBM 3820/3812 CMS format

Tape prices: \$92.00 for first tape, \$72.00 for each additional tape. Postage: allow 2 lbs. for each tape.

Documents:

	Price \$	Weight	Quantity
T _E Xbook (vol. A) softcover	30.00	2	___
T _E X: The Program (vol. B) hardcover	44.00	4	___
METAFONT book (vol. C) softcover	22.00	2	___
METAFONT: The Program (vol. D) hardcover ...	44.00	4	___
Computer Modern Typefaces (vol. E) hardcover	44.00	4	___
L _A T _E X document preparation system	30.00	2	___
WEB language *	12.00	1	___
T _E Xware *	10.00	1	___
BibT _E X *	10.00	1	___
Torture Test for T _E X *	8.00	1	___
Torture Test for METAFONT *	8.00	1	___
METAFONTware *	15.00	1	___
Metamarks *	15.00	1	___

* published by Stanford University

Orders from within California must add sales tax for your location.

Shipping charges: domestic book rate-no charge, domestic priority mail-\$1.50/lb, air mail to Canada and Mexico-\$2.00/lb, export surface mail (all countries)-\$1.50/lb, air mail to Europe, South America-\$5.00/lb, air mail to Far East, Africa, Israel-\$7.00/lb.

Purchase orders accepted. Payment by check must be drawn on a U.S. bank.

Send your order to: Maria Code, DP Services, 1371 Sydney Drive, Sunnyvale, CA 94087
 FAX: 415-948-9388 Tel.: 408-735-8006.

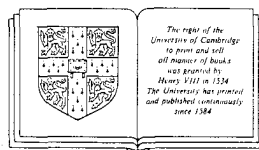
	<h1>\$79</h1> <p>IS ALL IT WILL TAKE TO ADD A FEW OF THESE TO YOUR T_EX DOCUMENTS</p>		<p>With T_EX_PI_C Graphics language*, you will have the tools to make graphics for your T_EX documents. T_EX_PI_C is now available from Bob Harris at:</p> <div style="text-align: center;"> <p>MICRO PROGRAMS INC 251 Jackson Avenue, Syosset NY 11791 Telephone: (516) 921 1351.</p> <p><small>* TUG Boat Volume 10, No. 4, Page 627 1989 Stanford Conference Proceedings</small></p> </div>
--	--	--	---

A new and unique service from the Printing Division of the Oldest Press in the World

T_EX-to-TYPE

The CAMBRIDGE service that lets you and your publisher decide how your mathematical or scientific text will appear.

Monotype output in Times and Helvetica as well as a complete range of Computer Modern faces from your T_EX keystrokes



For details contact

**TECHNICAL APPLICATIONS GROUP CAMBRIDGE UNIVERSITY PRESS
UNIVERSITY PRINTING HOUSE SHAFTESBURY ROAD CAMBRIDGE CB2 2BS ENGLAND**

TELEPHONE (0223) 325070

VECTOR TEX

T B
W U
C S
& H
E A
M

TEX FOR THE 90'S

Are you still
struggling with
PXL's, PK's or GF's?
Move on to scalable
fonts:

- Save megabytes of storage—entire VT_EX fits on one floppy.
- Instantly generate any font in any size and in any variation from 5 to 100 points.
- Standard font effects include compression, slant, smallcaps, outline, shading and shadow. New: landscape. New: scalable graphics.
- Discover the universe of MicroPress Font Library professional typefaces: not available from any other T_EX vender.

List price \$399 **Introductory offer \$299**

Includes the VT_EX typesetter (superset of T_EX), 10 scalable typefaces, VVIEW (arbitrary magnification on EGA, CGA, VGA, Hercules, AT&T), VLASER (HP LaserJet), VPOST (PostScript), VDOT (Epson, Panasonic, NEC, Toshiba, Proprinter, Star, DeskJet) and manuals.

Introductory offer expires on January 1, 1991. S/H add \$5. COD add \$5. WordPerfect Interface add \$100. Site licenses available. Dealers' inquiries welcome. Professional typefaces available for older implementations of T_EX.



MicroPress Inc.

68-30 Harrow Street, Forest Hills, NY 11375
Tel: (718) 575-1816 Fax: (718) 575-8038

Publishing Services



From the Basic

The American Mathematical Society can offer you a basic T_EX publishing service. You provide the DVI file and we will produce typeset pages using an Autologic APS Micro-5 phototypesetter. The low cost is basic too: only \$5 per page for the first 100 pages; \$2.50 per page for additional pages, with a \$30 minimum. Quick turnaround is important to you and us ... a manuscript up to 500 pages can be back in your hands in just one week or less.

To the Complex

As a full service T_EX publisher, you can look to the American Mathematical Society as a single source for all your publishing needs.

Macro-Writing	T _E X Problem Solving	Autologic Fonts	Keyboarding
Art and Pasteup	Camera Work	Printing	Binding

For more information or to schedule a job, please contact Regina Girouard, American Mathematical Society, P.O. Box 6248, Providence, RI 02940 or call 401-455-4060 or 800-321-4AMS in the continental U.S.

Mathematica Help

Variable Symbols, the company dedicated to giving you the tools to experience the full power of Mathematica, brings you 3 new ways to master Mathematica. When you want to be a more proficient Mathematica user, call us at 415-843-8701.

Mathematica Training

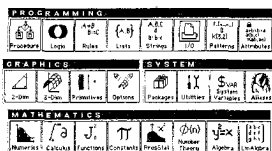
Hands-on workshops for 5-20 people at introductory, intermediate, and advanced levels taught by Variable Symbols staff, including Nancy Blachman, Cameron Smith, and Eran Yehudai. Our clients include Argonne, Boeing, Boston University, Genentech, Howard University, Lawrence Livermore, MITRE, Shell Development, Stanford University, Xerox, and Wolfram Research, Inc.

Mathematica Quick Reference

This reference defines all Mathematica built-in functions, options, aliases, and special forms; \$9.95.

Mathematica Help Stack

HyperCard-based Macintosh help system that was developed by Robert Campbell; categorizes built-in objects and provides visual representation of many functions for easy learning and reference; \$89. Free demo disk available.

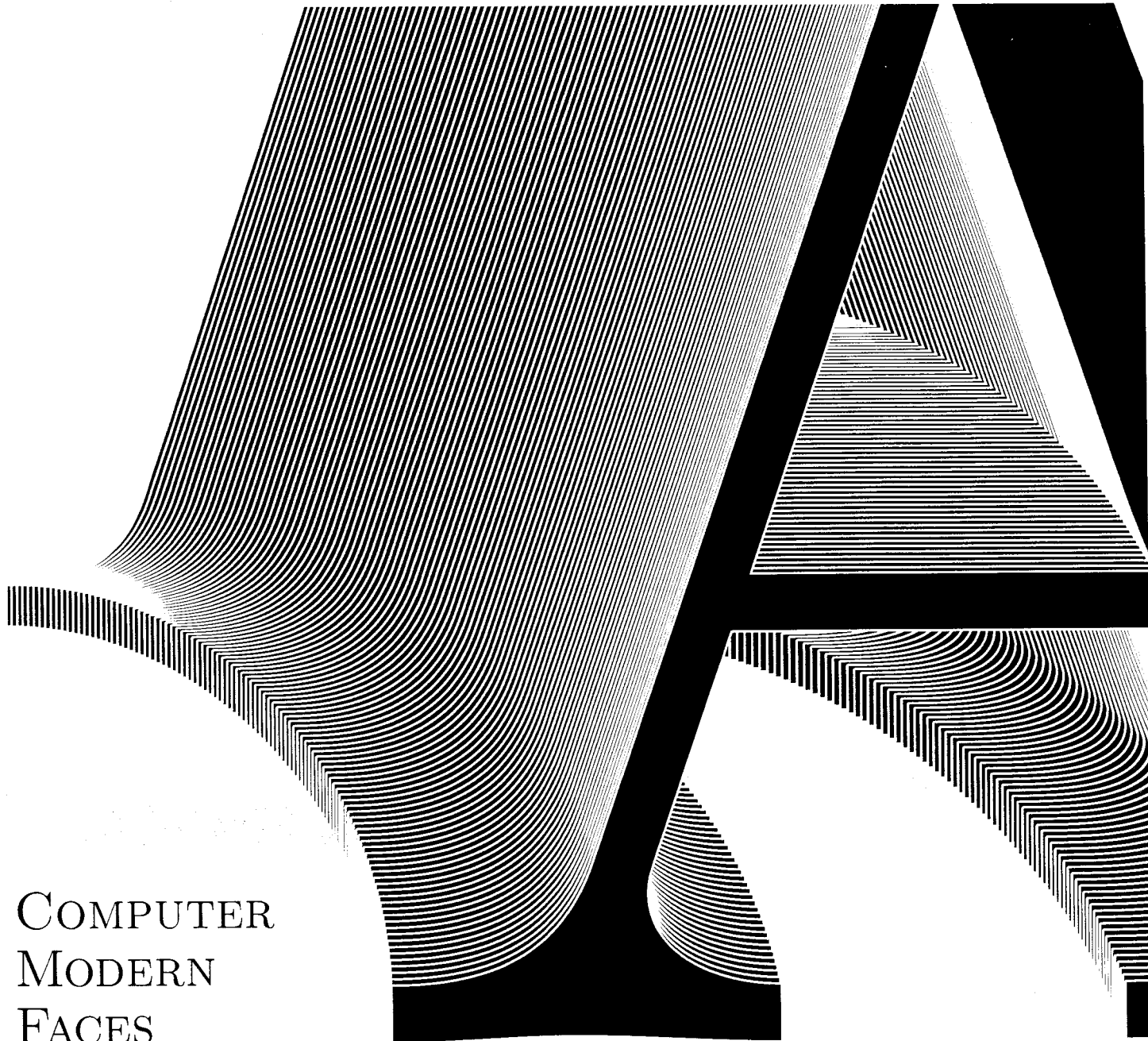


Variable Symbols, Inc.
P.O. Box 9013
Berkeley, CA 94709-0013
Telephone: 415-843-8701

1810

Index of Advertisers

693	American Mathematical Society
683	ArborText
M-16	Blue Sky Research
691	Cambridge University Press
685	Computer Composition
690	DP Services
686, 687	K-Talk Communications
688, 689	Kinch Computer Company
692	MicroPress, Inc.
691	Micro Programs, Inc.
684	T _E X Users Group
693	Variable Symbols, Inc.



COMPUTER
MODERN
FACES

ADOBE
TYPE 1
POSTSCRIPT
FONTS

BLUE
SKY
RESEARCH

Forty faces of Computer Modern
designed by Donald Knuth
published in Adobe Type 1 format
compatible with
Adobe Type Manager
and all PostScript printers

\$345.00 Educational \$195.00
Macintosh or MS-DOS

Blue Sky Research
534 Southwest Third Avenue
Portland, Oregon 97204 USA
(800) 622-8398, (503) 222-9571
FAX (503) 222-1643